



# Warren s. Johnson Society of Retirees, Inc.

An independent organization of retired employees of Johnson Controls, Inc.

[www.johnsoncontrols.com/retirees](http://www.johnsoncontrols.com/retirees)

## NEWSLETTER

VOL. 20, NO. 3 / Fall 2013

### Fall Luncheon

Thursday, October 17, 2013

Alioto's - 3041 N. Mayfair Road

Cost: \$14.00

11:00 Gather ~ 11:45 Lunch ~ 1:00 Program

#### Menu Selection

- Chicken Normandy w/dressing; cranberry sauce – sherbet for dessert
- Baked flounder stuffed w/crabmeat; buttered new potato – sherbet for dessert

#### “Prevent Falls:

#### Common Sense Things to Consider”

**Dennis Janisse**, C.Ped, Asst Professor, Dept. PM&R, Medical College of Wisconsin.

Falls are the second leading cause of accidental death in the US. And, you don't have to be that old to be concerned – the 2010 breakout has 44% of falls involving people of age 45 to 64 – that's pretty young! Dennis will address some of the mental and physical health issues contributing to falls as well as how to get those shoes right for your feet and overall well-being.

Dennis promises to make the talk both informative and fun. My impression is that Dennis is as dedicated and established as a reference in his profession as his dad, Norm, was in the building controls industry. This will be interesting and valuable, see you there!

Please make checks payable to **WSJ Society**  
**Mail check & menu selection to arrive by**  
**October 10<sup>th</sup>**

**WSJ Society**  
**P. O. Box 1425**  
**Grafton, WI 53024**

*Please let us know of any dietary restrictions  
when making your reservation.*

### Summer Luncheon

[photos on page 3]

July 18, 2013

By Jude Anders, VP Program

#### “WSJ Society Online – Going Live”

It was a hot summer day in Milwaukee – we have not had many of those this year! A good day to get together with friends. Italian Fest was about to start at the Summerfest grounds. We celebrated over lasagna, seafood stuffed tomato, and spumoni – that's Italian!

Kim Metcalf-Kupres who is leading the WSJSociety.com project, gave her time to be with us for lunch. Karen Sommer, our project manager, introduced the website and its features. She also described how it will serve to help our members connect and build community.

It really is fantastic for these two very busy executives to take the time to be with us. They were great. When you hear about the commitment of Johnson Controls to sustainability, lifelong engagements, and community - believe it!

WSJSociety.com and executive support for our society demonstrate that it is for real. Thanks to Steve, Alex, Kim, and Karen we can connect, help each other, and contribute to our communities with support from WSJSociety.com that has no match.

By now you all should have received the mailings on registration for the site, and maybe given it a run. If so, you may be reading this on the website. If not, give it a try. To find it, just enter “WSJSociety.com” into your browser's search window. I think you will find it friendly to use. Karen and her team have done an awesome job with the site. Now it needs you sharing your stories and interests with other members – enjoy!



# The President's Page

By Paul Froehling

## **WSJ Society.com**

Even as this is being written, the new WSJ Society website is being tested. By the time you read this, it will be up and running. Some of you will probably be reading this on the new website. It is without question the most dramatic change in the way the organization functions since its founding in 1989. Members now have an active role.

If you haven't yet registered, please do so. If you have just visited the site or even if you have registered and found it intimidating or difficult in any way, click on the "Help" button or go to the "Suggestions Box" link on the Members menu. We want to make the site as accommodating as possible to our members.

## **Officers Update**

Several changes have taken place in our WSJ Society leadership.

Brian Bould is our new Treasurer. Brian has served on the board since 2009. He replaces Bonnie Lenz who has been on the board since 2004 and has served as Treasurer since then. We thank Bonnie for her years of faithful service. She will continue as a member of the board.

Greg Pascucci is our new Membership VP. Greg joined the board in 2012. He replaces John Enright who has been on the board since 2004 and has served as Membership VP since then. We also thank John for his years of faithful service.

Jude Anders has accepted the position of Communications VP. This position

has been vacant since 2004. It now has new significance with the launching of WSJ Society.com. You will find Jude communicating with you and fostering communication among members as you navigate the website.

Jude will continue as acting Program VP until another volunteer is found to fill the position.

## **Board Vacancies**

New board members are needed! In addition to filling the Program VP position, it is important to keep continuity on the board as others of us have served for many years and will want to be replaced. Participating on the board is gratifying. Consider it. Then contact a current board member. With your help the WSJ Society will continue to flourish.

## **Sharlene Wardinski**

We were saddened with the passing of Sharlene on July 19. Sharlene served on the board since 2002 and was Program VP from then until 2012. Her service on the board, as it was with her years of service to the company, was always performed with excellence and in the interest of "customer satisfaction". If you haven't already done so, please read the article about Sharlene's 100 year old mother in the last newsletter. Thanks to Barb Helgesen for writing the article and providing the picture of Sharlene and her mother and sisters.





# Summer Luncheon Photos

**First Time Attendee to the quarterly luncheon held July 18, 2013**



Rich Nabholz – South Bend

**Board of Directors changes**



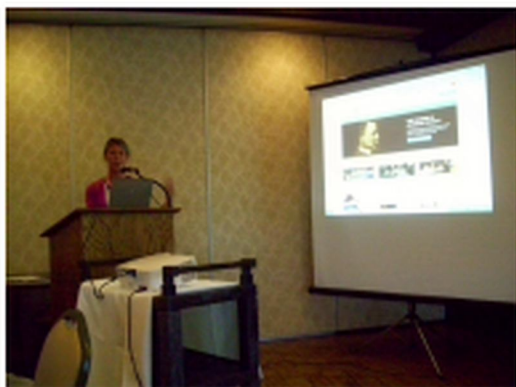
President Paul Froehling thanks Bonnie Lenz for her years of service as Treasurer.



Kim Metcalf-Kupres and Karen Sommer  
WSJ Society.com project



Thank you, John Enright, for your dedication to the Society and your position as VP of Membership.



A look at the new retiree website!

# JCI in the News

## Johnson Controls' Roell to retire; Molinaroli elected CEO



Johnson Controls Inc. chairman and CEO Stephen Roell will retire by the end of the year and will be succeeded by current vice chairman Alex Molinaroli, the company announced Wednesday. Molinaroli will become president and CEO effective October 1 and will join the company's board at that time. He will also become chairman effective January 1<sup>st</sup>. Roell will remain chairman until his planned retirement on December 31, when he will also leave the board, Glendale-based Johnson Controls said in a news release.

"I am extremely proud of what we've accomplished over the past six years during my tenure," Roell said in the release. "I've enjoyed my entire 32-year career with Johnson Controls and want to express my appreciation to the Johnson Controls employees and our directors for their support. It has been an honor to lead and represent the company in the community and with our shareholders."

Johnson Controls manufactures automotive interior systems and batteries and provides facility management systems and services. Molinaroli will become the ninth CEO in the company's 129-year history.

Under Roell, Johnson Controls has grown to record levels of revenue and employees, making \$41.8 billion in fiscal 2012 and employing 170,000 people globally, the company said.

Molinaroli joined Johnson Controls' building efficiency business in 1983. He was elected a corporate officer in 2004 and appointed vice chairman in January. He previously was president of the power solutions business.

"He brings a wealth of experience and knowledge about our businesses and the industries we serve, so I'm confident that he and the team will continue to build Johnson Controls' global leadership positions," Roell said.

"Our company's standard for excellence and culture of integrity were built by great leaders who preceded me," Molinaroli said. "Steve Roell has truly embodied all that is good about our people and culture, and he has been a great role model for all of us."

*Copied from July 24, 2012 Business Journal*



## Photo from the past



Edmund Fitzgerald (center) visits the Johnson Service Co. with shop supervisor Raymond A. Luedke (left) and personnel director Herbert H. Koepke.

*- Image credit: Journal Sentinel files*

Edmund B. Fitzgerald, who led Cutler-Hammer for 15 years and was a key player in bringing major league baseball back to Milwaukee, died on August 28<sup>th</sup>. He was identified as one of four men who led the long fight to get another baseball franchise for Milwaukee. One of the other four, Bud Selig, was Brewers president. Fitzgerald was by then Brewers vice president. His Milwaukee roots ran deep: One grandfather was pioneer shipbuilder William E. Fitzgerald; another grandfather, Frank R. Bacon, founded Cutler-Hammer. Selig, now commissioner of Major League Baseball, said Fitzgerald "played a crucial role in bringing baseball back to Milwaukee."

*Excerpted from Milwaukee Journal-Sentinel  
Friday, August 30, 2013*

**Warren S. Johnson**  
**Society of Retirees, Inc.**

This Society is dedicated to providing meaningful services to the retirees of Johnson Controls, Inc. and the opportunity to meet socially with other members of the Society. This Newsletter is published quarterly to contribute to those goals. Your input is welcomed and encouraged.

**OFFICERS:**

Paul Froehling	President
Jude Anders	VP-Communications
Greg Pascucci	VP –Membership
Jude Anders	VP-Program [acting]
Brian Bould	Treasurer
Ron Kuta	Secretary

**DIRECTORS:**

Neil DeVries	John Meyer
Bonnie Lenz	Larry Petricek
Carol Lomonaco	

Erica Wolfe, ExOfficio

***For membership information and dues payment, please contact Brian Bould, Treasurer. Checks should be made payable to WSJ Society and mailed to:***

Brian Bould, Treasurer  
P. O. Box 1425  
Grafton, WI 53024  
Email: [bbould@att.net](mailto:bbould@att.net)

***For street or email address changes, and items to be included in the newsletter, please contact:***

Erica Wolfe  
Newsletter Editor  
5207 Robinwood Lane  
Hales Corners, WI 53130  
414.573.0527  
Email: [ericawolfe@yahoo.com](mailto:ericawolfe@yahoo.com)

## In Remembrance

**Paul Roundy** passed away earlier this summer. He was the President of World Services and was a force behind the Energy Efficiency Forum held in Washington, D.C. He is survived by his wife Evelyn.

**Jeannette Cason**, beloved wife of retiree Floyd Cason, passed away on June 7, 2013.

**Bill Huth** passed away July 12<sup>th</sup>. He worked in Milwaukee as software developer. He is survived by his wife Myra.

**Edith Walden** passed away July 13<sup>th</sup>. Beloved wife of JCI retiree Dave Walden.

**Jean Eaton** passed away on August 5<sup>th</sup> at the age of 93. She retired after 27 years of service in Milwaukee.

**Doug Taipala** passed away on August 9<sup>th</sup>. He was a draftsman in Milwaukee. He is survived by his wife Dona, their children and their families.

**Sharon Phillips** passed away August 13<sup>th</sup>. She worked as an administrative assistant in Milwaukee. She is survived by her brother Roger (Marge) Phillips.

**Larry Korta** passed away on September 6<sup>th</sup>. Devoted husband of Eleanore, their children and grandchildren. In addition to his work at JCI, he was professor emeritus at MSOE.

Rest in Peace





# Retiree News

## Joel Richmond

Retired and living in Wauwatosa, WI. Managing five duplexes they own there. They enjoy traveling, including to Arizona for Brewers' Spring Training. Brewers and Packers fans. Happily married to Linda, an interior designer, for 32 years. Enjoy family, friends and happy hours! Life is good!

## Lou Davit

Life is good for this JCI retiree. My wife, Jackie, and I were busy this summer revamping the shrubbery and deck at our home. Good outside hard work. We're rewarding ourselves with a trip to Jackson Hole, WY to visit with our son, Chris in early September, then to St. Louis for a family reunion. Also have a three-week trip to Europe planned for November to visit family and friends. One friend is Dominic Limpens and his wife Michelle who live in Brussels. Dominic was here in Milwaukee in training at JCI in 1974, learning the sales and service "ins and outs" of our HVAC controls. His father owned a large HVAC firm in Brussels and was a friend of Fred Brengel. Their first daughter, Noelle, was born here and I was her proxy Godfather. Dominic was quite a tennis player and was #1 in our JCI club. I'm glad for our robust retiree group and the good interesting newsletter. Keep up the good work!

## Joe Bartoletti - Remembering Sharlene

Sharlene Wardinski is remembered in Milwaukee as the nice person she was. Few in Milwaukee realize the saintly esteem that the field organization held for Sharlene. She was the "go to" person when someone was in trouble ... lead time may have been extended well beyond when a critical item was needed, a job changed (and just possibly someone somehow had forgotten to order) ... Time and time again she'd work her magic, finding a solution and saving someone from an angry

contractor dependent upon our timely installation. And she'd do it in her soft gentle manner without accusation or incrimination. Move over those of you in Johnson's Pantheon of Greats. There's a lady deserving of some space.

## Ron Caffrey

"Ronald Caffrey has received a Distinguished 50-Year Member Award from ASHRAE. The award was presented at the Society's 2013 Annual Conference held in June. The award is given to individuals who have been a member of the Society for a minimum of 50 years, and are a past Society president, Fellow ASHRAE, Distinguished Service Award recipient or have performed outstanding service to ASHRAE or its predecessor societies.

Caffrey is partner, BSC Partners Consultants, Saint Petersburg, FL. He is the co-inventor of "Personal Environments," which was the first major step in the appreciation of increased individual productivity with personal control over temperature, lighting and background noise. Caffrey is also the founding chair of the Intelligent Buildings Institute. He served as a corresponding member of Technical Committees 1.4, Control Theory and Application, and 2.1., Physiology and Human Environment. Caffrey received a Distinguished Service Award in 1976.

ASHRAE, founded in 1894, is a building technology society with more than 50,000 members worldwide. The Society and its members focus on building systems, energy efficiency, indoor air quality, refrigeration and sustainability. Through research, standards writing, publishing and continuing education, ASHRAE shapes tomorrow's built environment today." *ASHRAE press release*



# People And news...

## Gene Bendix

This happened about 10 years after I started working at Johnson Service Co. Rex Vernon, vice president of advertising and sales promotion, had passed away and Marv Herrick took over. Larry Carlson handled all the trade shows and made the demonstration panels that were used in them all over the USA and Canada.

These trade shows utilized six large panels, about 5 x 3 feet, shipped in big wooden crates along with a frame and base for each one. Also, there was a header about 12" x 12" and 10' long with large florescent light bulbs with our name on the front. This header had to be placed on the top of the panels.

I went to work on a Monday after a wonderful weekend. Marv was already there (Big Deal). As I got to my desk, I heard "Bendix get in here!!" (Bad news!) Larry had his appendix removed and he couldn't go to New York for the trade show. "Pack your suitcase and go to New York and handle the tradeshow at the Waldorf Astoria", Marv ordered. Wow, I thought to myself, the WALDORF ASTORIA!! "Yes, sir!" I enthusiastically exclaimed. Then Marv added, "You'll be staying across the street... Now, go!!!"

When I finally got to the Big Apple and the Waldorf, I found six huge wooden crates holding the exhibit that I had to assemble. Two "carpenters" were hired to do the grunt work. When the exhibit was assembled, there was no header across it. No crate could be found so I went to the loading dock. There it was -with 3 feet of it smashed. The trucking company brought it to the hotel standing upright and tried to make it fit under a bridge. It didn't make it, but they delivered it as instructed.

Max Rather, Eastern District manager and Vice President, came early to check out the exhibit. When he saw what had happened, he blew up and made Marv sound like he spoke perfect English! Mr. Rather shouted "At least get a sign with our name on it!" "Never mind, I'll have it made!" In half an hour the "sign maker" was there with a cardboard sign. My first time working a trade show and it was a disaster - through no fault of my own.

When the show was over, I packed up the remainders of the exhibit and had it shipped back. Then I flew back to Milwaukee to face Marv. "Wow!"

## Photo from the past



Edmund Fitzgerald (center) visits the Johnson Service Co. with shop supervisor Raymond A. Luedke (left) and personnel director Herbert H. Koepke.

- Image credit: Journal Sentinel files

Edmund B. Fitzgerald, who led Cutler-Hammer for 15 years and was a key player in bringing major league baseball back to Milwaukee, died on August 28<sup>th</sup>. He was identified as one of four men who led the long fight to get another baseball franchise for Milwaukee. One of the other four, Bud Selig, was Brewers president. Fitzgerald was by then Brewers vice president. His Milwaukee roots ran deep: One grandfather was pioneer shipbuilder William E. Fitzgerald; another grandfather, Frank R. Bacon, founded Cutler-Hammer. Selig, now commissioner of Major League Baseball, said Fitzgerald "played a crucial role in bringing baseball back to Milwaukee."

Excerpted from *Milwaukee Journal-Sentinel*  
Friday, August 30, 2013

# TIME?



..... YES, and time to  
renew your  
membership!

Keep in touch with your life-long work associates via the Newsletter! **Annual Association membership dues are \$5....** You may choose to pay several years in advance or pay a **lifetime membership of \$50** as over 500 members have chosen to do. New members (only) paying after September 1<sup>st</sup> will be credited for both the current and next year. Not sure you've paid your dues? Check the **first line of this issue's mailing label**. In addition to your name, it **identifies** the division from which you retired (B= Battery, C= Controls, X=Corporate and **the last year for which you paid dues** (2005, 2006, Life).

## MEMBERSHIP ENTITLEMENT COMES WITH 20 YEARS

If you are retired from Johnson Controls or still working there with 20 years of employment, you are eligible for membership in the Johnson Controls Retirement Society.

Send your membership fee to our treasurer, Brian Bould. The address is listed inside this newsletter.

