

MONITORING THE FIELD

September, 1972

Issued by Field Engineering
Johnson Service Co., Milwaukee, Wis.

Vol. 16, No. 9

NOW AVAILABLE

V-24 SOLENOID AIR VALVE
WITH 24V D.C. COIL

Order from Penn Controls in Oak Brook
Use Purchase Order
Penn Code No. VII-PNA-105
Priced Similar to A.C. Model

* * *



Our Georgetown Assembly Plant has been in full operation for more than a year and one-half already. In addition to hard work in the plant, they are familiarizing the Johnson name within the community. A basketball team was entered in the Lexington Recreational League and ended its season with a winning 19 - 14 record. Team members on the first Georgetown basketball team were, from left to right in the front row, Larry Covington, Phil Breeding and Rowland Esham. In the back row were, from left to right, Amos Fightmaster, Dick Sass, Bill Barnhill, Dan Hoffman, Art Washington, Otis Webb and Doug Simons.

* * *

TRY IT . . . YOU'LL LIKE IT

For high or low signal selection applications where you automatically select a C-220 Type "H" or C-220 Type "L" from force of habit, consider using the C-5226 Signal Transmitter. You'll find that the C-5226 is easier to mount (in-line), has low hysteresis and is much less expensive!

PENN POINTERS

A new case and cover assembly has been incorporated into the standard F61/F62 FLOW SWITCHES.

A vapor-proof flow switch, Type F61MB, has been added to the standard line of flow switches.

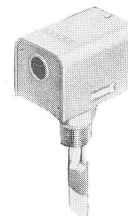
The F61KB, F61KD and all F62 controls have been redesigned into a folded case. The primary advantage of the new folded case is increased accessibility of wiring terminals and a slight reduction in price.

The F61MB is a vapor-proof flow switch designed to compete with the McDonnell-Miller FS8-V.

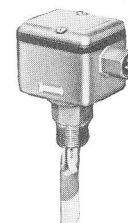
The purpose of vapor-proofing is to prevent condensation inside the switch associated with many flow switch applications. On chillers, the amount of condensation can be very significant, even resulting in the switch and/or operating mechanism freezing on low temperature chillers.

A big advantage over competition is the fact that the lead wires to the switch are brought out through a vapor-sealed conduit fitting. McDonnell-Miller depends on the installer to effectively seal the conduit hole, and this normally just does not get done.

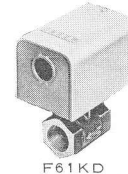
The complete water and air flow control line is described in a mailing bulletin which is available from the Sales Promotion Department in Milwaukee. Ask for Form 3891. Bulletins are also available. Price Sheets will be issued in the near future.



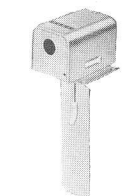
F61KB



F61MB



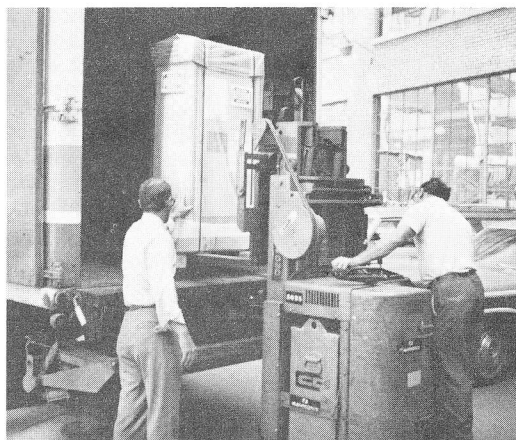
F61KD



F62AA

* * *

RIGHT ON SCHEDULE



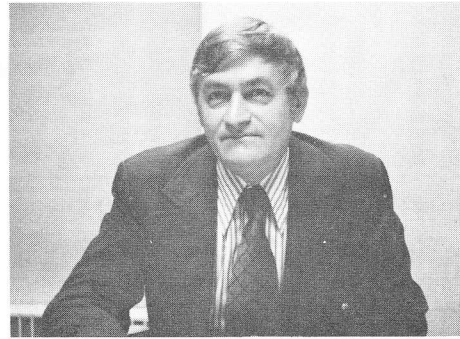
JC/80 loop remote cabinets for Methodist Hospital in Memphis, Tennessee are shipped from the factory on schedule as production continues to meet heavy demand.

WHO'S WHO ON FACTORY ROW

As Manager, Field Labor Relations, Kenneth E. Goetschel is instrumental in establishing policy and procedural guidance which will permit a coordinated effort in the resolution of matters pertaining to field construction labor.

Ken represents Johnson Service Company on the Labor Relations Committee of the Pneumatic Control Systems Council, which was formed in 1967. It is an association for labor relations purposes, and consists of representatives from Johnson, Barber-Colman, Honeywell, Powers and Robertshaw (all employers of control fitters who are members of the United Association).

Johnson obtains manpower from more than 400 different IBEW and UA locals across the country, and separate contracts must be maintained for each local. Ken has this message to pass along: "We cannot overemphasize the importance of prompt submission to Milwaukee of field labor matters. This area of our business continues to become more complex, and the resolution of problems usually requires considerably more time than our people anticipate."



**Ken Goetschel, Manager
Field Labor Relations**

A graduate of the University of Wisconsin, Ken served as a First Lieutenant with the Marine Corps during World War II and the Korean Conflict. He has served as secretary of the Industrial Relations Association of Wisconsin and past president of the Milwaukee County Industrial Recreation Council. He has been employed by Johnson Service Company since 1951.

"\$UCCESS IS"

T... by and for the Johnson SERVICE Organization.

OThe Western Region prevails this month as three of our features tell of "WR" achievements:

NEW OFFICER INSTALLED



**Bob
Pagliasotti**

Service Sales Manager **Bob Pagliasotti** of our **DENVER OFFICE** was installed as ASHRAE Director and Regional Chairman of Region IX for 1972-73. Region IX includes the following chapters: El Paso, Nebraska, New Mexico, Rocky Mountain, South Dakota, Utah and Wichita. Congratulations, Bob! It is through efforts like yours that the Johnson image is strengthened within the industry.

BE ON THE ALERT!

Who knows what evil lurks in the heart of a unit ventilator? **Pat Donahue** knows! A serviceman for our **FARGO OFFICE**, Pat was doing some service work in a school at Fort Yates, N.D. He removed the cover from one of the units and started to disassemble a control valve. Suddenly, what appeared to be a dusty coil of rope struck at him, just missing his hand and striking his boot. The "rope" turned out to be a rattlesnake! Fortunately, Pat had some previous experience handling snakes so he wasn't harmed.

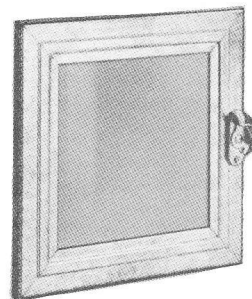


Fargo Serviceman Pat Donahue and "Snappy"

SIGHT-THROUGH ACCESS DOORS FOR DUCTWORK

Glass, sight-through, insulated access doors allow a visual inspection of critical mechanical equipment components such as fire dampers, control dampers, coils, fans, filters, humidifiers, and other related items.

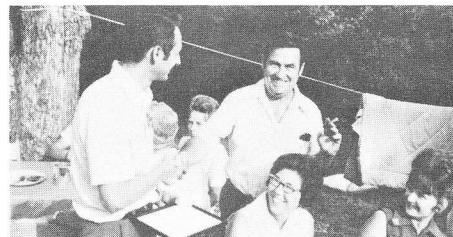
Service Salesman **Tom Mulrine** from our **LA CROSSE OFFICE** has been buying these doors and then selling them to his customers. Tom reports that these access doors are available in 12 sizes ranging from 8" x 8" to 24" x 24" and hinged models or cam latches and striker plates. They are of prime galvanized sheet steel construction. Complete details can be obtained from **CESCO, INC.**, 5151 Idaho Avenue, N., Minneapolis, Minnesota, 55428.



**Sight-Through
Access
Door
Available
from
CESCO, INC.**

* * *

LOYALTY AWARD

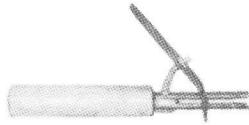


Hollis Nowland, left, received a 10 year Loyalty Award pin from **Dan McGovern**. Hollis is a Service Salesman in our **ST. LOUIS OFFICE**. Interested spectators in the foreground are Hollis's wife **Louise** and **Carol Schroeder**, wife of **Hans Schroeder**, Installation Manager in St. Louis.

CONSTRUCTION

IDEA OF THE MONTH

Pilot Light Lamp Removal



For inserting and extracting miniature lamps, **Paul Feeny, Providence Office**, suggests a Model S-339 switchboard lamp extractor made by Jonard Industries Corporation. This tool is available through Graybar. Price is less than \$3.00.

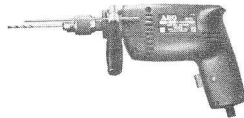
* * *

TOOL TALK

BRANCH PURCHASING DIRECTORY: In several instances, past experience indicated that it would be simpler for the branches to purchase certain tools and other construction equipment directly from the vendor instead of through the Johnson Construction Material and Tools Catalog. The BPD (one copy was sent to each branch office) includes an entire section on "Construction Tools" which were previously listed in the Construction Tools Catalog. Some of the listed items are:

PAGE "TOOLS-1"

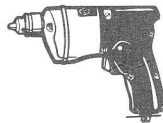
HAMMER DRILLS



These hammer drills are two-speed drills furnished with a carrying case. Two models are shown, one for heavy duty and one for light duty. They are for use as standard drills and also for drilling holes in masonry and concrete.

PAGE "TOOLS-2"

BATTERY OPERATED DRILL



This Black & Decker drill includes battery pack and charger; 1/4" chuck, 800 R.P.M.

PAGE "TOOLS-3"

STORAGE BOXES



The manufacturer's catalog sheet shows a variety of parts organizers and storage bins available from Safco. Local stocking distributors are also listed.

NEWS

SPOTLIGHT ON CONSTRUCTION



**Roger LaRue, Installation Manager
La Crosse Branch Office**

"A good installation manager must have thorough knowledge of construction — heating, ventilating and air conditioning systems, controls and electrical systems. He must be a leader and have the capacity for getting along with people and be willing to make that extra effort to improve branch office installation operations." That is La Crosse Branch Manager E. K. Edwards' description of the ideal installation manager. Mr. Edwards proudly adds that La Crosse Installation Manager Roger LaRue fits that description to a tee.

Roger's special attention to new construction materials and procedures assures the La Crosse office of using the most efficient methods of installation.

His history with Johnson dates back twenty-four years to 1948 when he was first hired as an inventory clerk. Two years later he became a construction mechanic. His hard work and vast amount of knowledge gained over the next 20 years resulted in his appointment in 1970 as Installation Manager of the La Crosse Office.

Roger is a native of Milwaukee, Wisconsin and is a member of Pipefitters Local #601 in Milwaukee. He spent his military time in the U.S. Marine Corps where he attained the rank of sergeant. Although he's kept busy with his family of five children, he manages to set aside enough time to be a Boy Scout Leader and Minnesota Firearms Instructor. He is active in the Lions Club and American Legion. Living in northwestern Wisconsin affords a perfect setting for hunting and trap shooting and he also does some conservation work.

* * *

Construction News is contributed by the Central Construction Department and all correspondence concerning it should be directed to Clyde Frampton, 8-383, Milwaukee.



Bob Evans confers with Central Construction Department Manager Arn Quakkelaar to determine how the new BEIMS program will fit in with our Japanese operation. Bob is the Regional Engineer from Saginomiya Johnson Controls Co., Ltd. in Tokyo. Before accepting the Japanese assignment a year ago Bob was the Southeastern Regional Engineer in Atlanta.

* * * *

CINCINNATI OFFICE LOSES 82 YEARS

Three Cincinnati Office Pipefitters are retiring this year after serving a combined total of 82 years with the Cincinnati Office.

Former Construction Superintendent **ERV WIND** has 47 years of service with the company (1925 to 1972), Construction Mechanic **HARRY HUPPERTZ**, 18 years (1954 to 1972) and Construction Mechanic **BILL SCHLENSKER**, 17 years (1955 to 1972). All three men have been members of Cincinnati Pipefitters Local #392.

Cincinnati Branch Manager T. D. Reiley paid tribute to his three loyal employees: "All three of these men have faithfully devoted themselves to the welfare and growth of the Johnson Service Company and the Cincinnati, Ohio Office. Men with their stature and experience are tough to replace and they will never be forgotten."

Mr. Reiley, all the employees of the Cincinnati Office and the entire Johnson Service Company extend a **HARDY THANKS** to these men for a **JOB WELL DONE** and wish them a long and happy retirement!



Bill Schlensker (left), Erv Wind (center) and Harry Huppertz (right) are retiring this year after serving a combined total of 82 years with the Cincinnati Office.

SAFETY FIRST!

OSHA has announced the following fines for failure to maintain records and post notices as required:

- \$100.00 FINE – Failure to Maintain OSHA Forms 100 and 101.
- \$ 50.00 FINE – Failure to Post OSHA Notices.
- \$500.00 FINE – Failure to Post a Citation for an Alleged Violation at or near Violation Site.
- \$100.00 FINE – Failure to Post OSHA Form 102, Summarizing Injuries & Illnesses.
- \$200.00 FINE – Failure to Report Within 48 hours to Nearest OSHA Office an Occupational Fatality or Accident Causing Hospitalization of 5 or More Workers.

REMEMBER

INJURIES HURT US MUCH MORE THAN FINES.
WE MUST ALWAYS WORK SAFELY!